

# ORWAK MULTI 5070-COMBI

The ORWAK MULTI 5070-COMBI is a baler and an in-bin compactor in the same machine. It is a versatile all-round solution that takes care of both the bagged mixed waste and your recyclable packaging material.



VERSATILE



BALE WEIGHT  
CARDBOARD

## ORWAK BENEFITS



### MORE PRODUCTIVE USE OF TIME

Less time spent on waste handling, more time for your core activities!

### MORE SPACE & ORDER

Our balers rapidly minimize the space the waste takes up, keeping aisles free and tidy.

### LESS COSTS, MORE VALUE

More compaction = less waste volume to transport. Fewer transports required results in lower transportation costs and reduced CO<sub>2</sub> emissions. Sorting at source yields a higher quality of waste material for recycling.

## WHY ORWAK MULTI?

- Sorting and compaction of several waste types at source
- Top-loading of the material in open chambers
- Total freedom to increase capacity by adding additional chambers

**ORWAK**  
PART OF **SULO** GROUP

# ORWAK MULTI 5070-COMBI

Allround solution

## DUAL FUNCTION UNIT

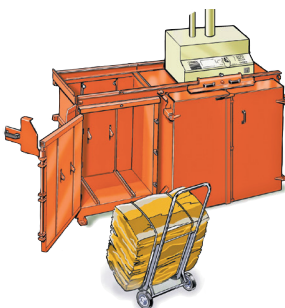
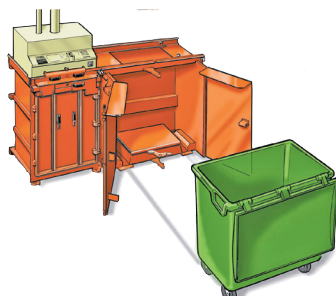
When you opt for the 5070-COMBI, you get a baler for recyclables and an in-bin compactor in the same machine!

## USER-FRIENDLY

The top-loading multi-chamber unit is simple to operate and convenient to feed with new material.

## VERSATILE

It takes care of both dry and semi-wet waste as well as baling cardboard boxes, paper and plastics.



## ORWAK MULTI 5070-COMBI IS OPTIMIZED FOR:

### PAPER

- Paper sacks
- Cardboard
- Shredded paper

### PLASTIC FOIL

- Shrink film
- Plastic bags

### OTHER METALS

- Steel straps

### OTHER PLASTICS

- Plastic straps

### SEMI-DRY WASTE

- Bagged general waste

### EXTENDABLE SYSTEM

Add an additional chamber to extend your sorting and compaction station!

### DESIGNED FOR STANDARD BINS

It is suitable for most standard 660-liter wheeled bins.

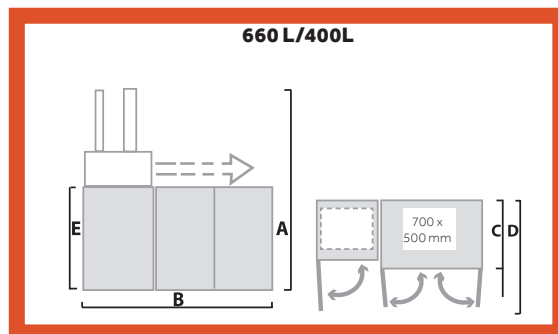
### BALE TROLLEY INCLUDED

The 5070-COMBI is always delivered with a trolley for easy baling and internal transportation of the bale.

## DIMENSIONS & SPECIFICATIONS

DIMENSIONS				
A	B	C	D	E
660L/400L	660L/400L	660L/400L	660L/400L	660L/400L
2265/2315 mm	2550/1960 mm	920/808 mm 1011/899 mm*	1675/1733 mm	1325/1333 mm

\*Including strap holders



TECHNICAL SPECIFICATIONS								
LOADING APERTURE	CYCLE TIME	PRESS FORCE	BALE SIZE	BALE WEIGHT	MACHINE WEIGHT 660L/400L	NOISE LEVEL	PROTECTION CLASS	OPERATING POWER
Width: 700 mm Height: 500 mm	36 secs	3 ton, 30 kN	Width: 700 mm Depth: 500 mm Height: 700 mm	Cardboard: Up to 50 kg Plastic: Up to 80 kg	Total weight: 803/618 kg Bale chamber only: 196/196 kg Bin chamber only: 450/265 kg Press unit only: 157/157 kg	< 70 db (A)	IP 55	Single Phase 230 V, 50 Hz, 10 A

We reserve the right to make changes to specifications without prior notice. Bale/bag/bin weights are dependent upon material type.

## ORWAK AB

Svetsaregatan 4  
S-576 33 Sävsjö  
SWEDEN  
Tel: +46-(0)382-15700  
info@orwak.com

ORWAK.COM

**ORWAK**  
PART OF SULO GROUP